

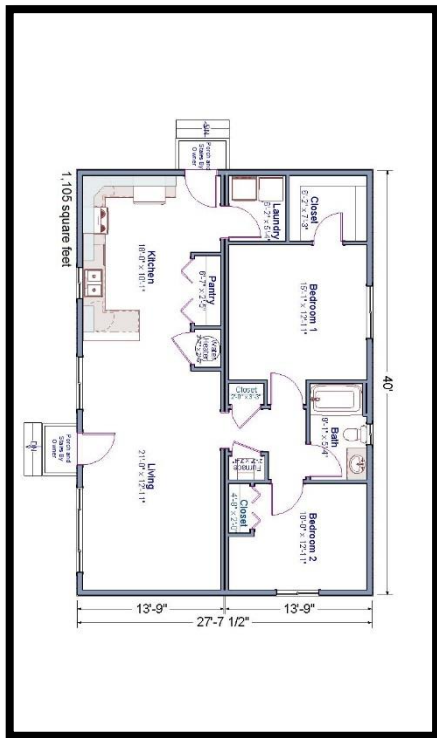


2019/20 Housing Options in Bend:

- Land Lease Model
- Cottage Community or Condo/Townhouse style
- 2 bedroom*
- Limited availability of 3-4 bedroom homes
- 40 year land lease with lower property taxes

2019/20 Housing Options in Redmond:

- 2 or 3 bedroom
- Single family detached home
- Possible land-lease model



*House size determined by household size at time of application



Habitat homes are Earth Advantage Certified. An Earth Advantage-certified house incorporates design elements, systems and materials that create superior indoor air quality, use natural resources responsibly, protect land, and lower water usage.



541.385.5387 | brhabitat.org



Updated 3-13-19

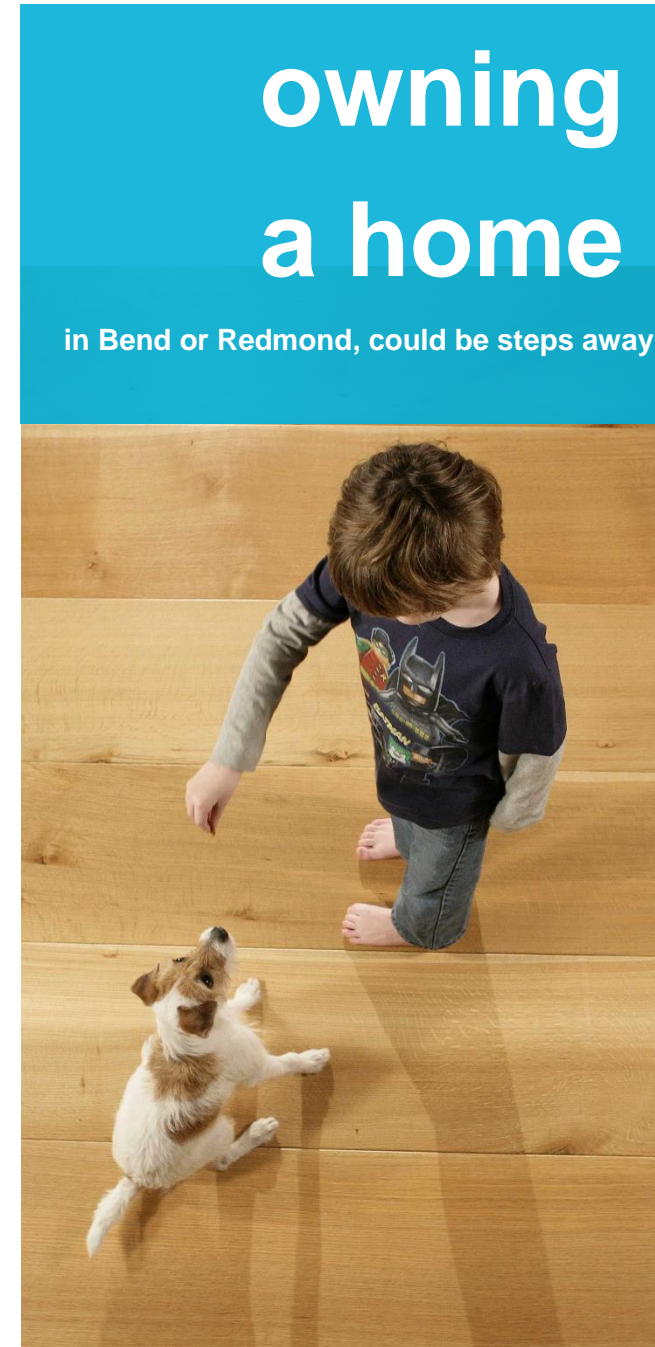
vision

a world where everyone has a decent place to live

mission

seeking to put God's love into action, Habitat for Humanity brings people together to build homes, communities and hope

Bend Redmond Habitat is dedicated to providing affordable homeownership opportunities for families and individuals in Bend and Redmond.



owning a home

in Bend or Redmond, could be steps away





eligibility

NEED

- Must live or work in Bend or Redmond for at least 1 year
- Need for improved housing conditions
- High housing cost vs. household income

ABILITY TO PAY

- Meet the current income guidelines (see table)
- Have steady source of income (*from employment, disability, social security etc.*) for 2 years. If self-employed; 3 years of tax returns
- Debt-to-Income ratio below 45% (*includes deferred school loans*)
- Minimum credit score of 620.
- Four years since discharge date, if declared a bankruptcy and 5 years from a short sale
- Able to **save at least \$2,000 for closing costs**
- No collections or judgments
- Primary applicant must have proof of legal residency

WILLINGNESS TO PARTNER

- Volunteer 150 hours, "sweat equity", per adult in the household, plus secure 100 donated hours
- Commit to homeownership education classes, and to regular meetings with a mentor
- Accept a decent and affordable home in Bend or Redmond
- Promote Habitat in the community
- Pledge to maintain and repair your home after purchase, and make house payments on time
- Complete three post-purchase workshops

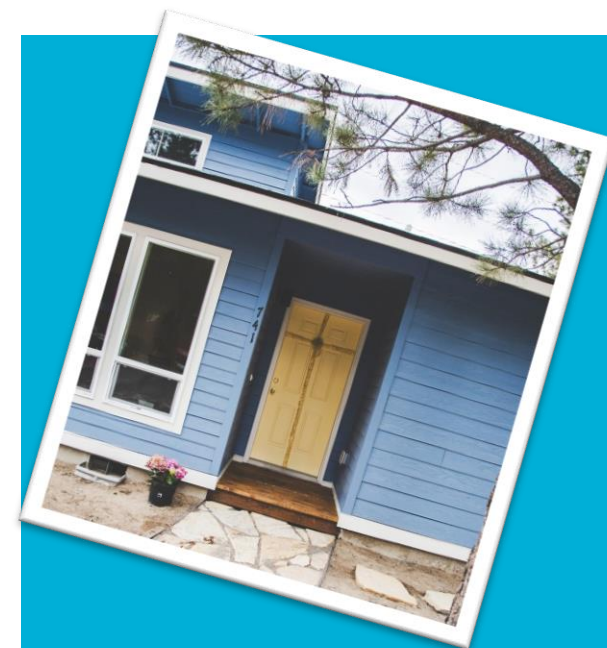
2019 income guidelines

Household Size	Minimum Household Income (40-44% AMI)	Maximum Household Income (80% AMI)*
1	\$ 30,000	\$ 39,000
<i>per mo.</i>	\$2,500	\$ 3,250
2	\$ 30,000	\$ 44,600
<i>per mo.</i>	\$ 2,500	\$ 3,717
3	\$ 30,000	\$ 50,150
<i>per mo.</i>	\$ 2,500	\$ 4,179
4	\$ 30,000	\$ 55,700
<i>per mo.</i>	\$ 2,500	\$ 4,642
5	\$30,080	\$ 60,200
<i>per mo.</i>	\$ 2,507	\$ 5,017
6	\$ 32,320	\$ 64,650
<i>per mo.</i>	\$ 2,693	\$ 5,388
7	\$ 34,560	\$ 69,100
<i>per mo.</i>	\$ 2,880	\$ 5,758
8	\$ 36,760	\$ 73,550
<i>per mo.</i>	\$ 2,813	\$ 6,129

Income based on total household gross income (before taxes) up to 80% of the Area Median Income for Bend/Redmond. The income requirements are subject to annual revision as established by HUD.

5 steps to homeownership

- 1 attend an information session**
- 2 schedule intake appointment**
- 3 submit habitat program application**
- 4 get selected to partner with habitat**
- 5 apply for affordable home loan**



Features of a typical Habitat Home:

- 2 bathrooms
- In-floor radiant heat system
- 18 ft³ refrigerator (white)
- 30" gas range stove (white)
- Exhaust hood
- Xeriscaping
- Laundry room area
- Tank-less water heater
- Double-pane windows
- Window coverings for all bedrooms
- ADA Access (if required)

► inquire today

Visit our website and send us a contact form:

<https://brhabitat.org/homeownership/homeowner-inquiry-form/>